

## La galerie

henrique xavie

BEING THE DESIGNER ON THIS PROJECT WAS A REWARDING EXPERIENCE ON ITS OWN AND A VERY CREATIVE CHALLENGING ONE OF ITSELF BECAUSE IT POSES THE QUESTION OF WE CAN FILL A GAP AND MAKE IT BLEND BUT AT THE SAME TIME HAVE A UNIQUENESS TO ITSELF.

THE BUILDING IS ON WILCZA STREET - WARSAW, POLAND. LOCATED IN THE HEART OF THE CITY CENTRE NEAR TO BREATHTAKING LOCATIONS THAT THE CAPITAL CAN PROVIDE.

THE CALMNESS OF THE STREET ALONG WITH THE MAGICAL QUALITY OF THE BUILDING GIVES VISUAL ACCESS TO THE SOUTH WAS NECESSARY TO MAXIMIZE THE LIGHT IN THE BUILD BUT ALSO NOT EXPOSING IT TO A LOT WITH THE USE OF THE ARCHED SHADERS.

THE FIRST EXPERIENCE WHEN YOU GET WHEN YOU ENTER IS THE APARTMENTS. THE FIRST THREE FLOORS GIVE A SENSE CALMNESS ACCOMPANIED BY MINIMAL LINES GUIDING YOUR EYES TO THE LARGE WINDOWS FILLING THE AREA WITH THE BEAUTIFUL NATURAL WINDOW LIGHT ENRICHED BY THE VIEW OF THE OUTSIDE.

THE TWO MAIN LOFT APARTMENTS ARE DOUBLE FLOORED WITH A DOUBLE-FACED GIVING THE TENET AN ASTONISHING VISUAL EXPERIENCE. AN UPON ARRIVING ON THE 4TH FLOOR, YOUR BODY IS SHOWERED WITH A GORGEOUS SKYLIGHT. THE FIRST GLANCE AT THE APARTMENT YOU CAN SEE THE DOUBLE FLOOR AND THE DOUBLE-FACED WITH ITS UNIQUE BALCONY AND ARCHES TAKING YOU BACK TO THE RENAISSANCE ERA, BUT ALSO INCORPORATING A MODERN MINIMALISTIC AESTHETIC OF TODAY'S WORLD.

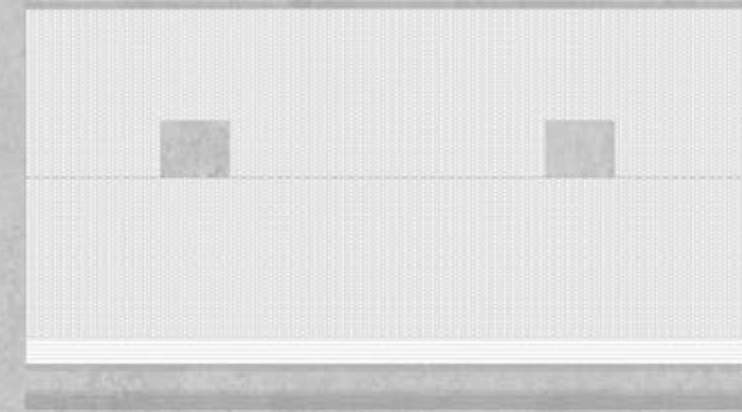


# La galerie

site map



roof plan  
1:100



ground floor  
1:100



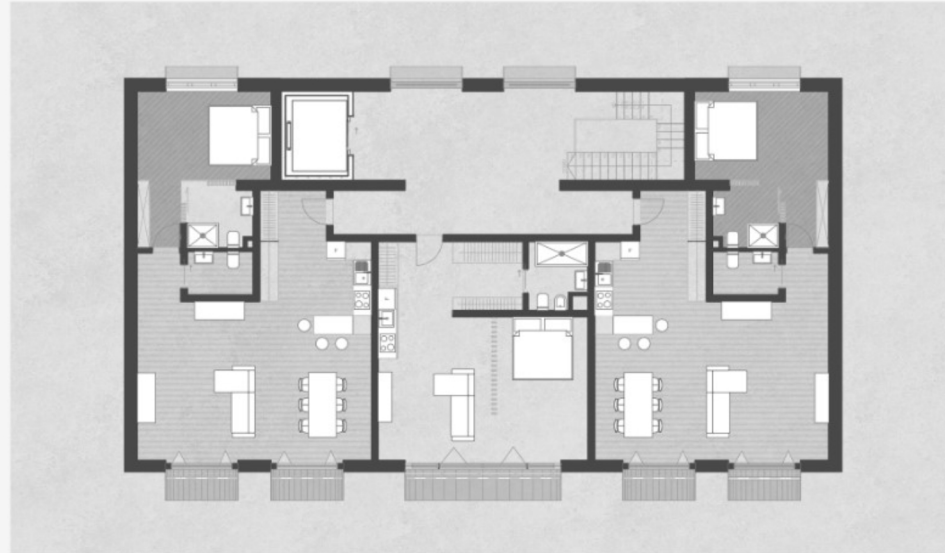
# La galerie

## PLAN

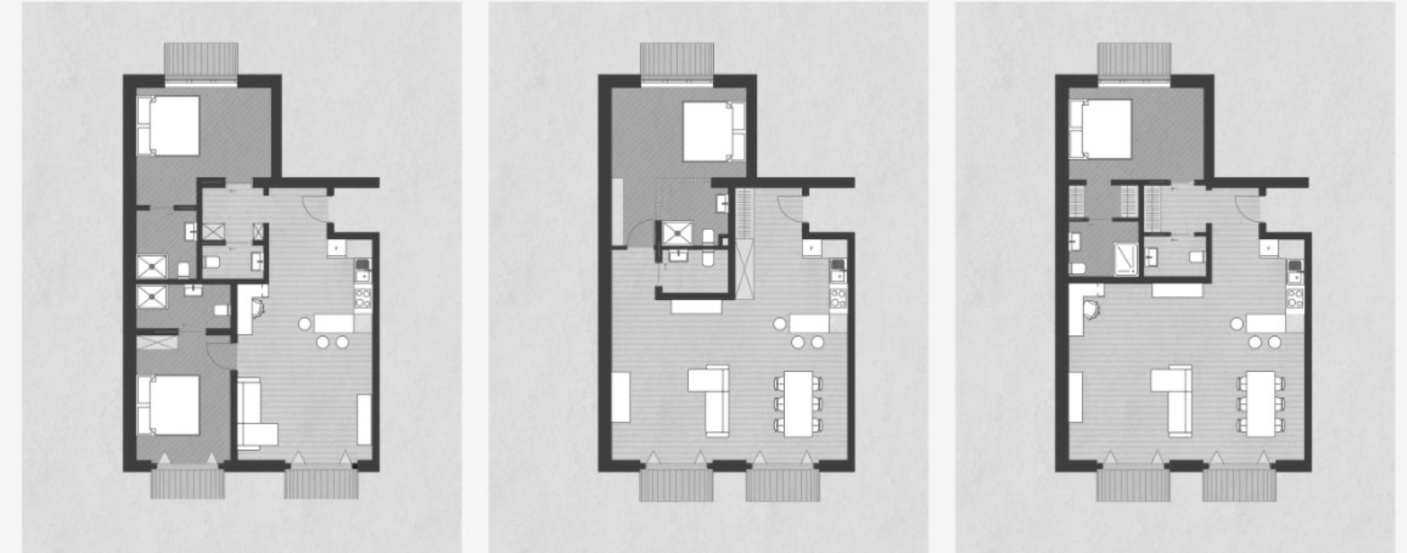


■ Private area  
▨ Living area

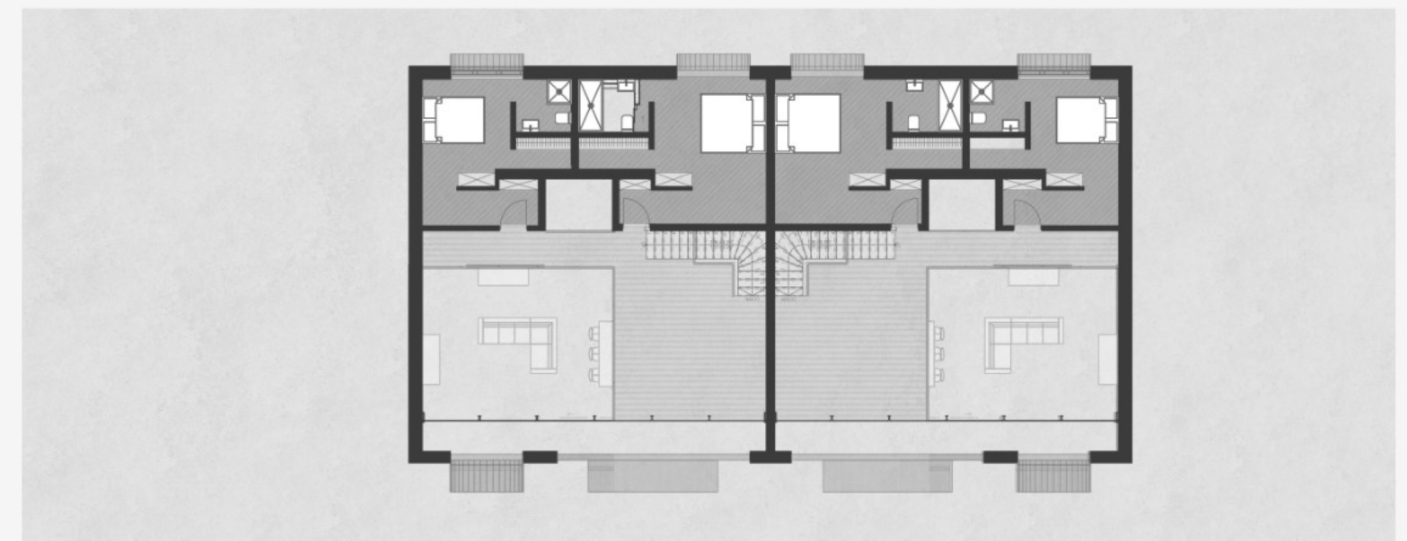
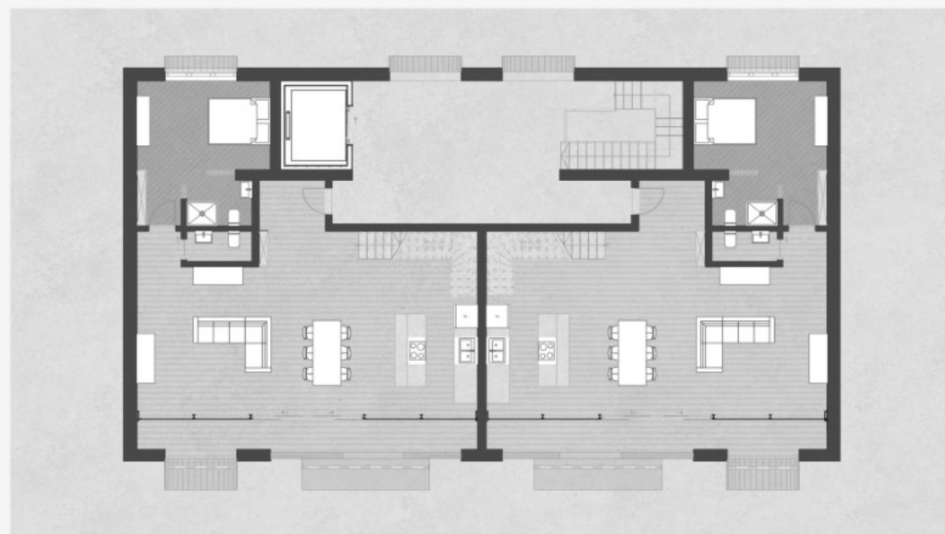
Level  
I - III



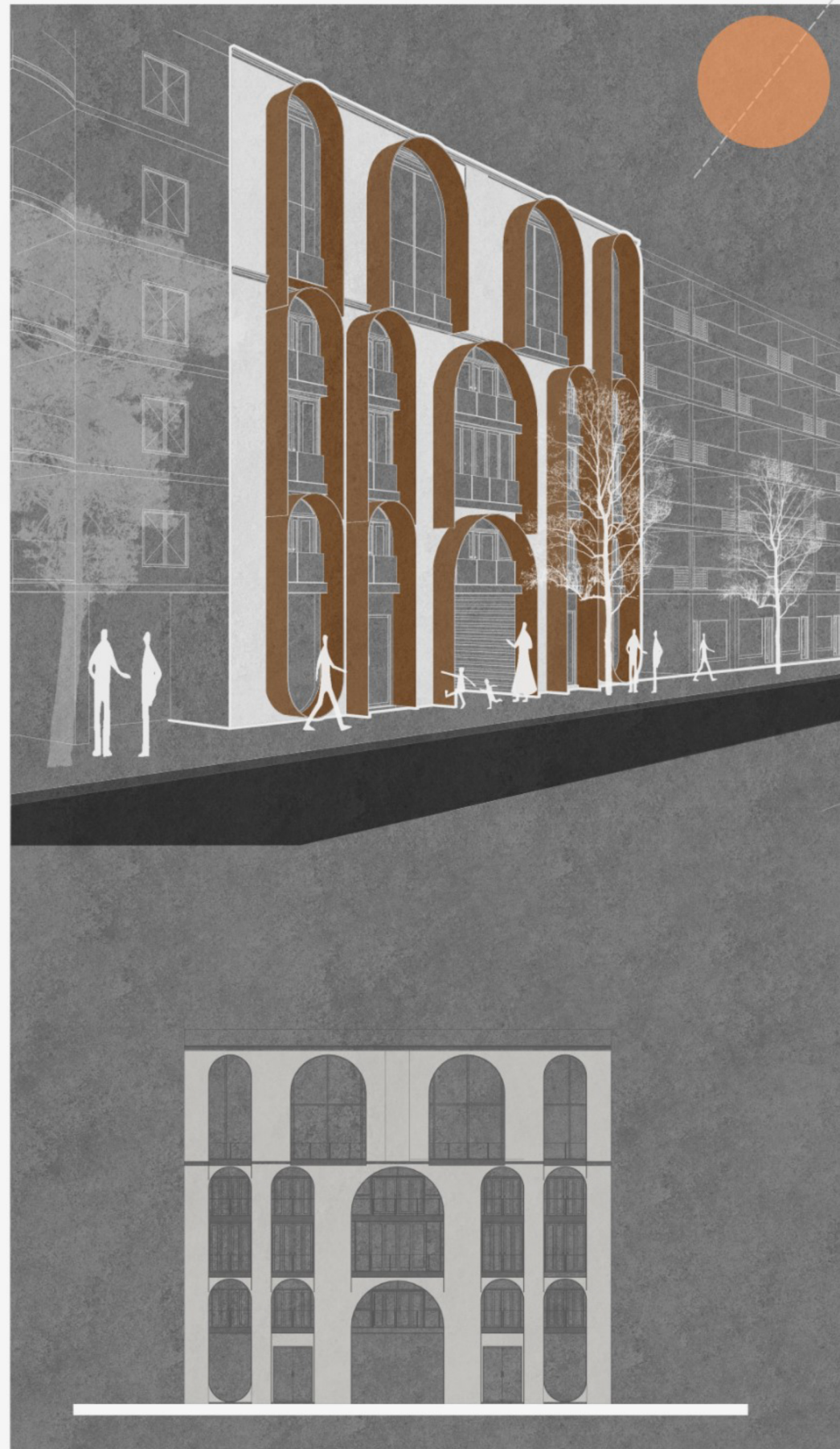
Apartament configuration  
options



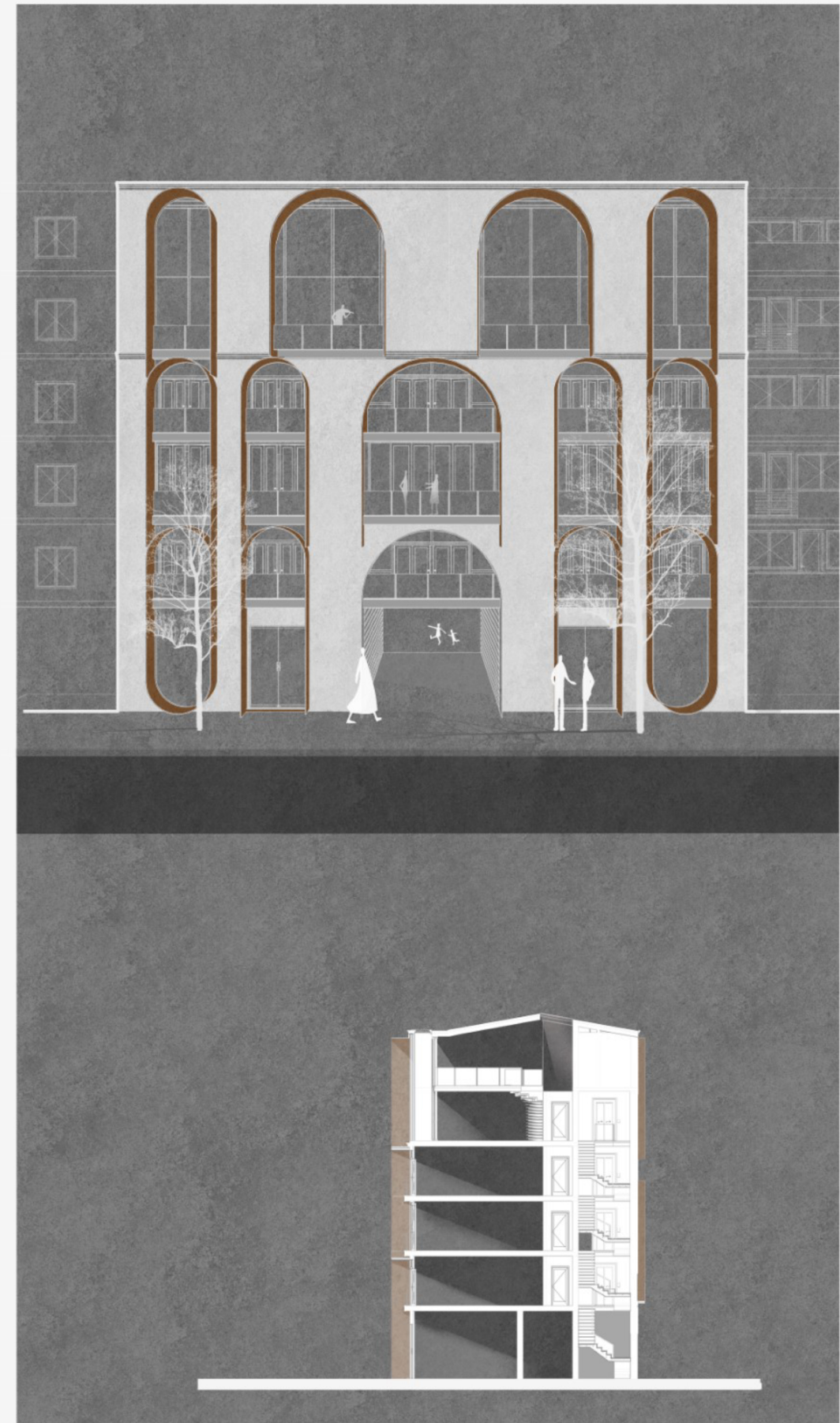
Level  
IV- V







Elevation  
1:100



Section  
1:100